

La fine dell'ultima glaciazione: Wurm  
15000 ~ 11000 anni fa





Çatal Hüyük

Hagilar

Taurus

Gian Hasan  
Agigöl  
Çiflik

Antitaurus

Mersin

Tell-Giudeide

Ras Shamra

Biblo

Munhata

Tell Ramad

Gerico

Beidha

Sinai

Erebekly Tepesi

Balikh

Beqaa

Buqros

Deserto Siriano

Bingöl

Nemrut Daghi

Çayönü

Tell-Halaf

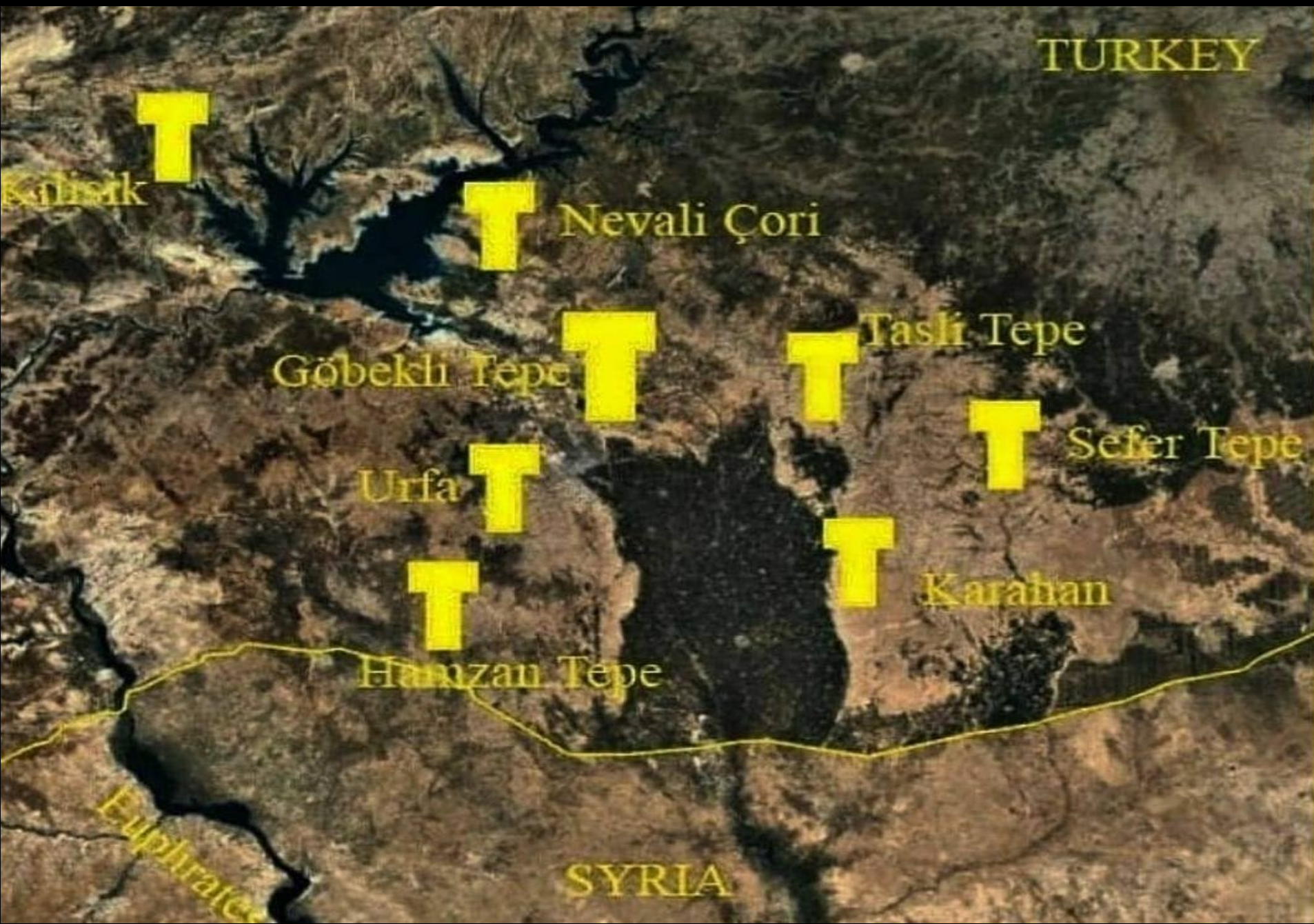
Eriva

Lago Van

Khabur

Eufrate

Tigri



# Gobekly Tepe - Turchia / Siria

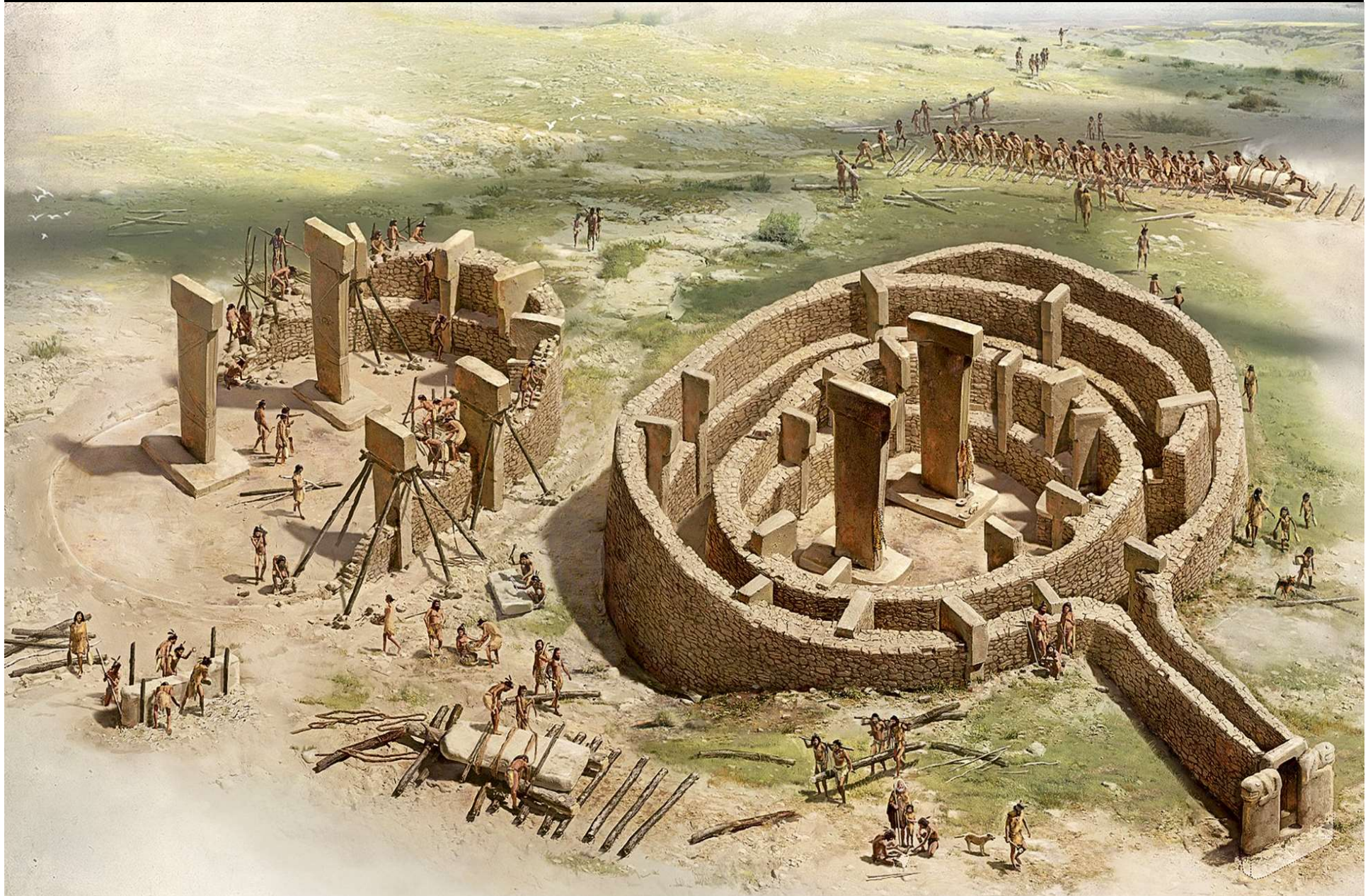


# Gobekly Tepe - Turchia / Siria





# Il più antico Tempio del mondo ~ 10000 a.C.



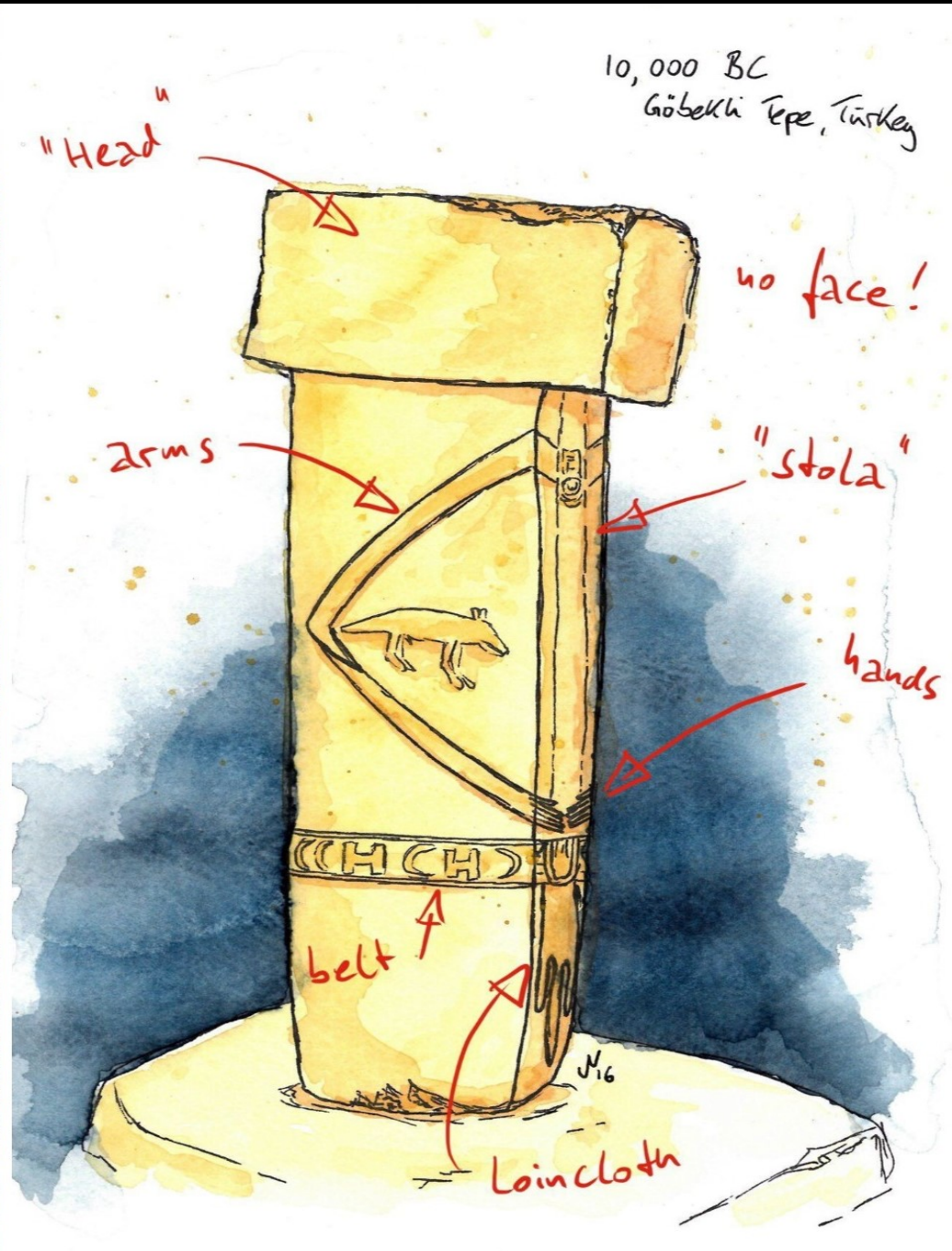
# Gobekly Tepe - Turchia / Siria



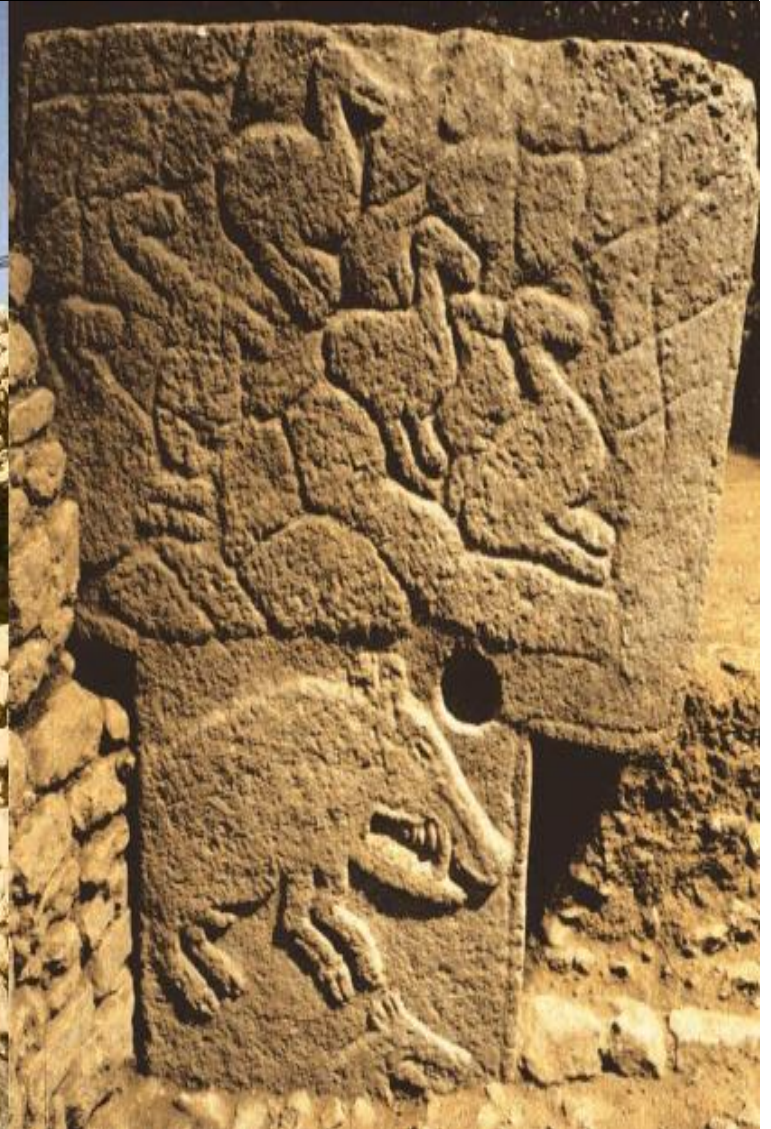


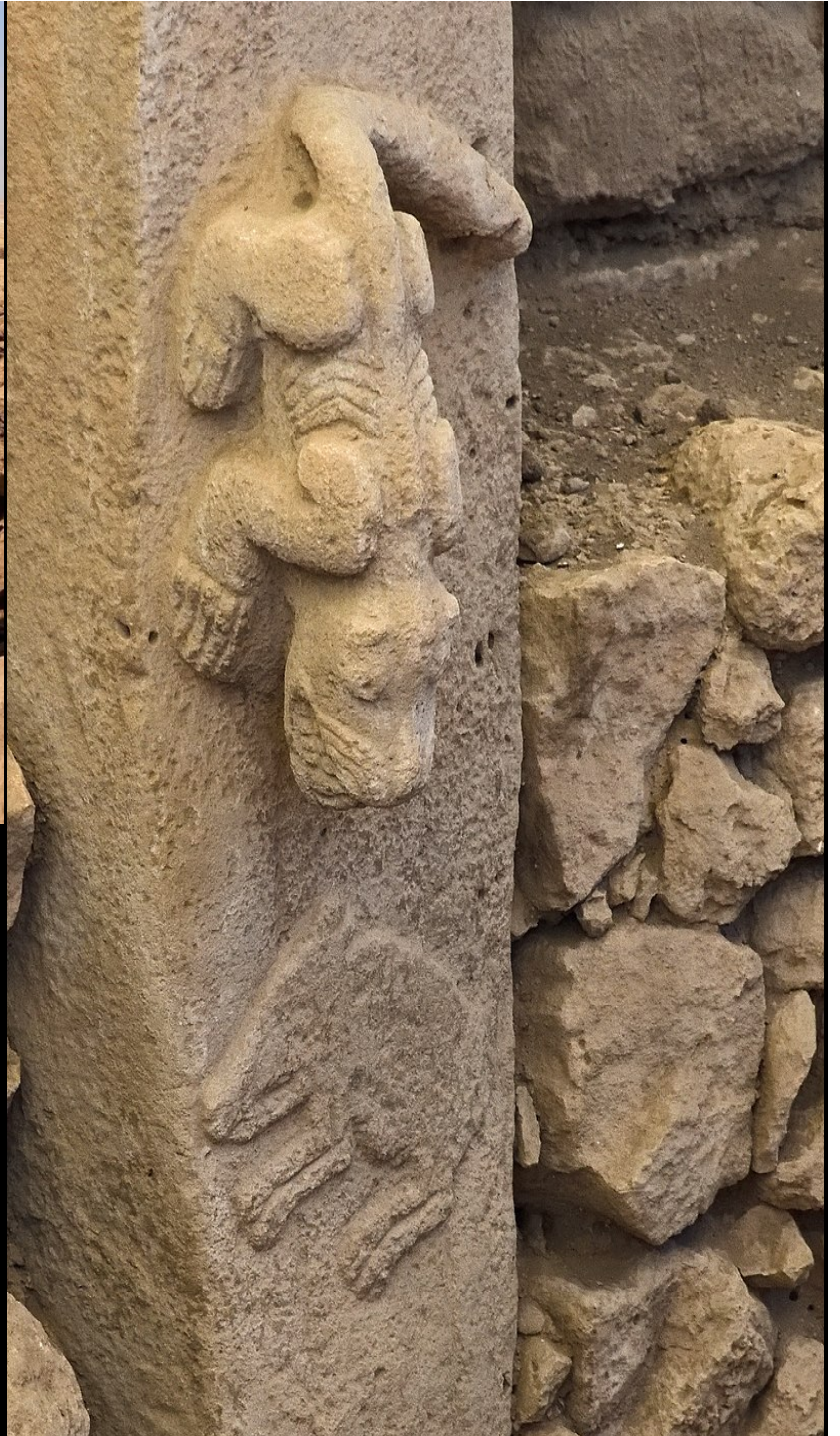
# Gobekly Tepe





# Gobekly Tepe





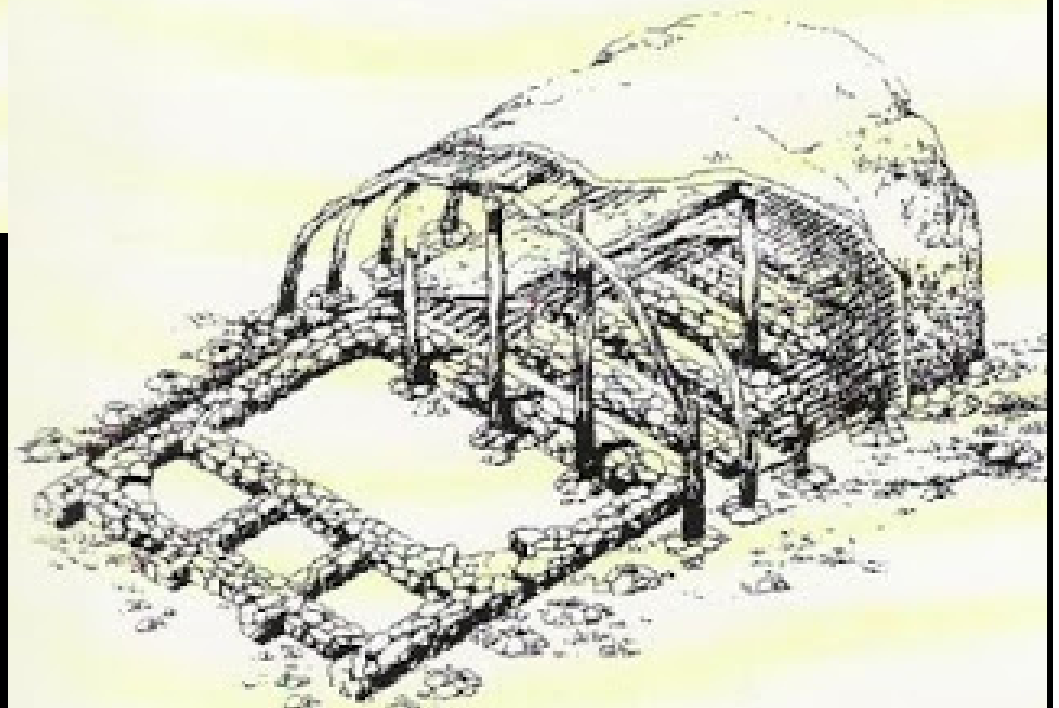
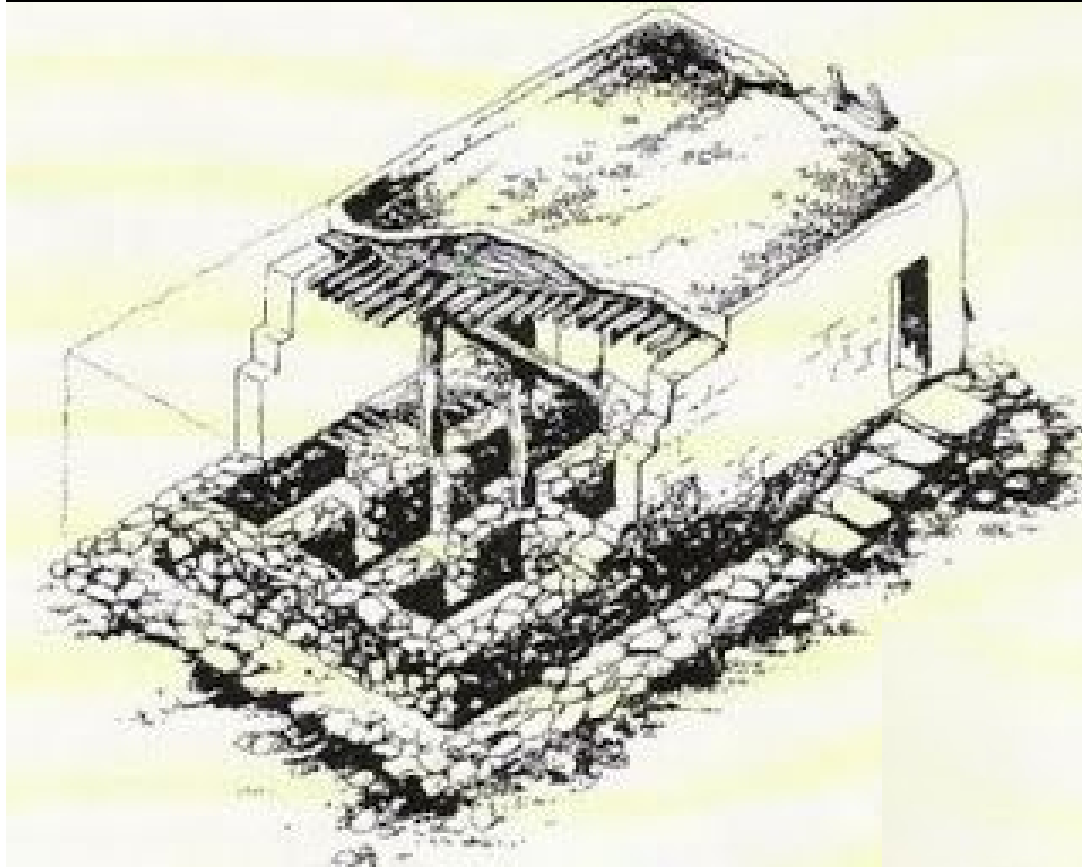
# Cayonu - Turchia



# Cayonu



# Cayonu



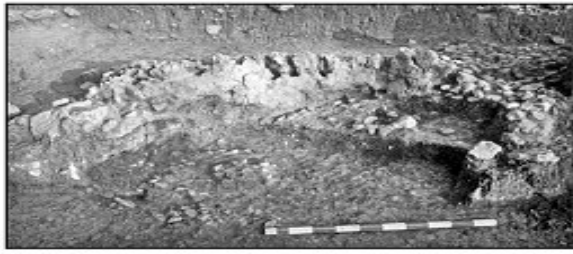
# Cayonu





# Cayonu





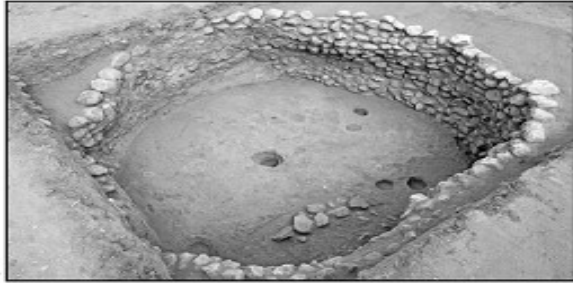
**1**



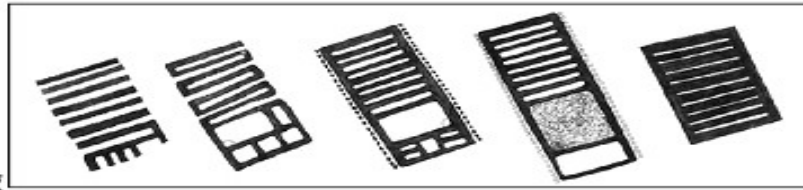
**e**



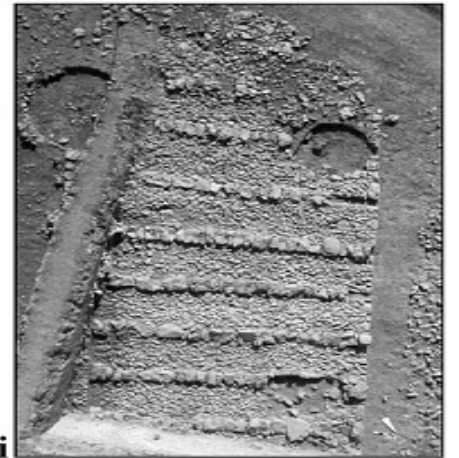
**f**



**d**



**g**



**i**



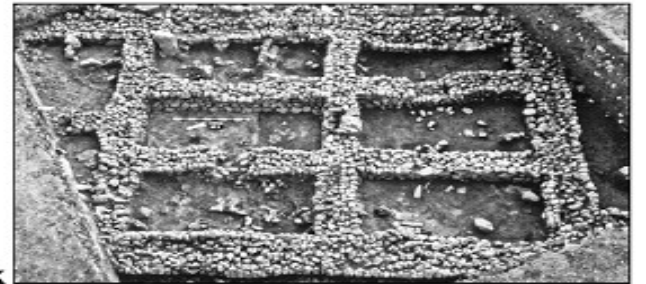
**c**



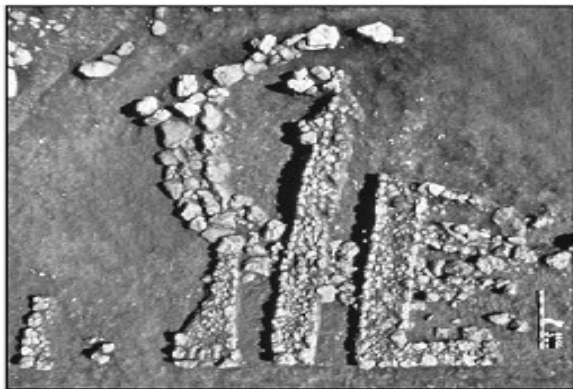
**h**



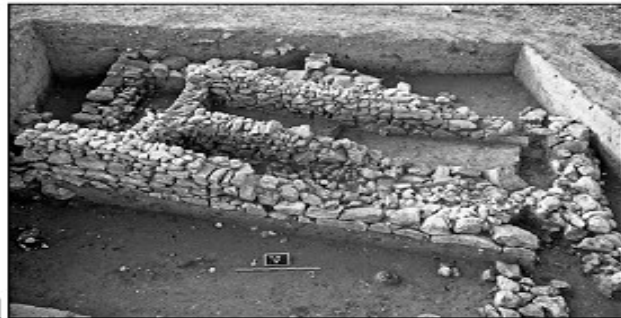
**j**



**k**



**l**



**l**



**m**

# Nevalı Cori



# Nevalı Cori



Foto: ChG/ANeV

# Nevalı Cori



# Nevalı Cori



Foto: ChG/ANeV

# Nevalı Cori



Foto: ChG/ANeV

# Nevalı Cori

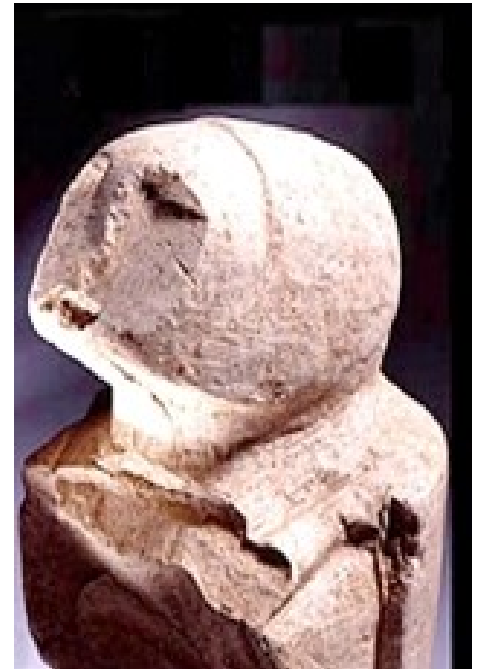
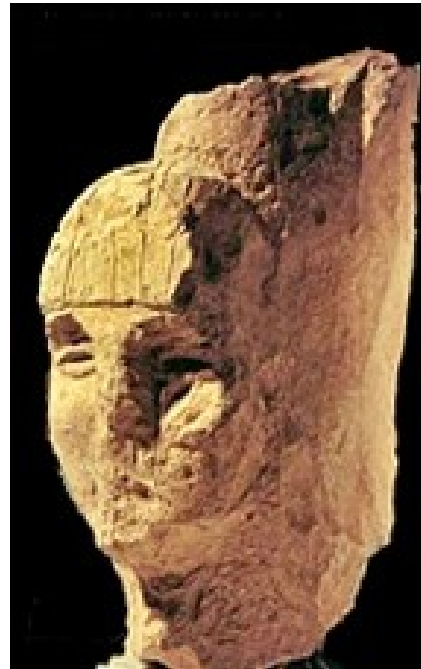
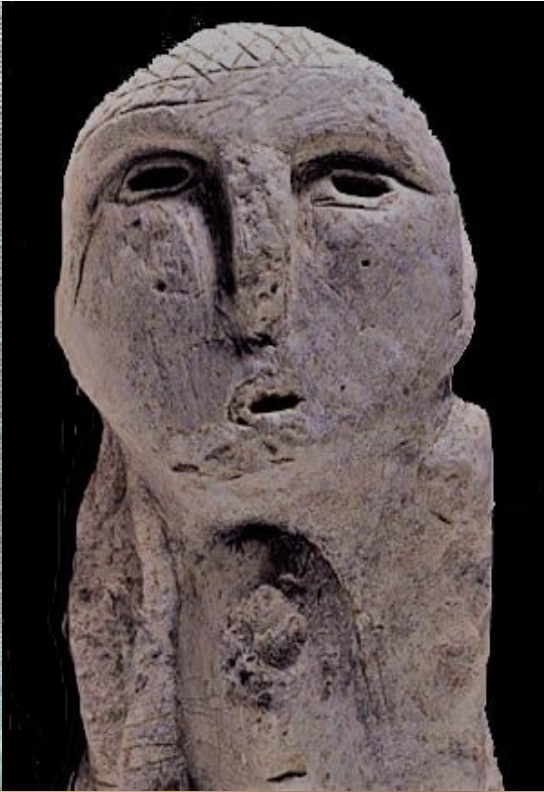


Foto: ChG/ANeV











Gerico



Gerico

# Gerico





Gerico





# Gerico





Gerico

# Gerico





Çatal Hüyük

# Catal Huyuk - Turchia - ricostruzione



# Catal Huyuk





# Catal Huyuk





# Catal Huyuk



# Catal Huyuk



La Dea Madre

# Catal Huyuk - Turchia



# Catal Huyuk - Turchia



# Catal Huyuk - Turchia



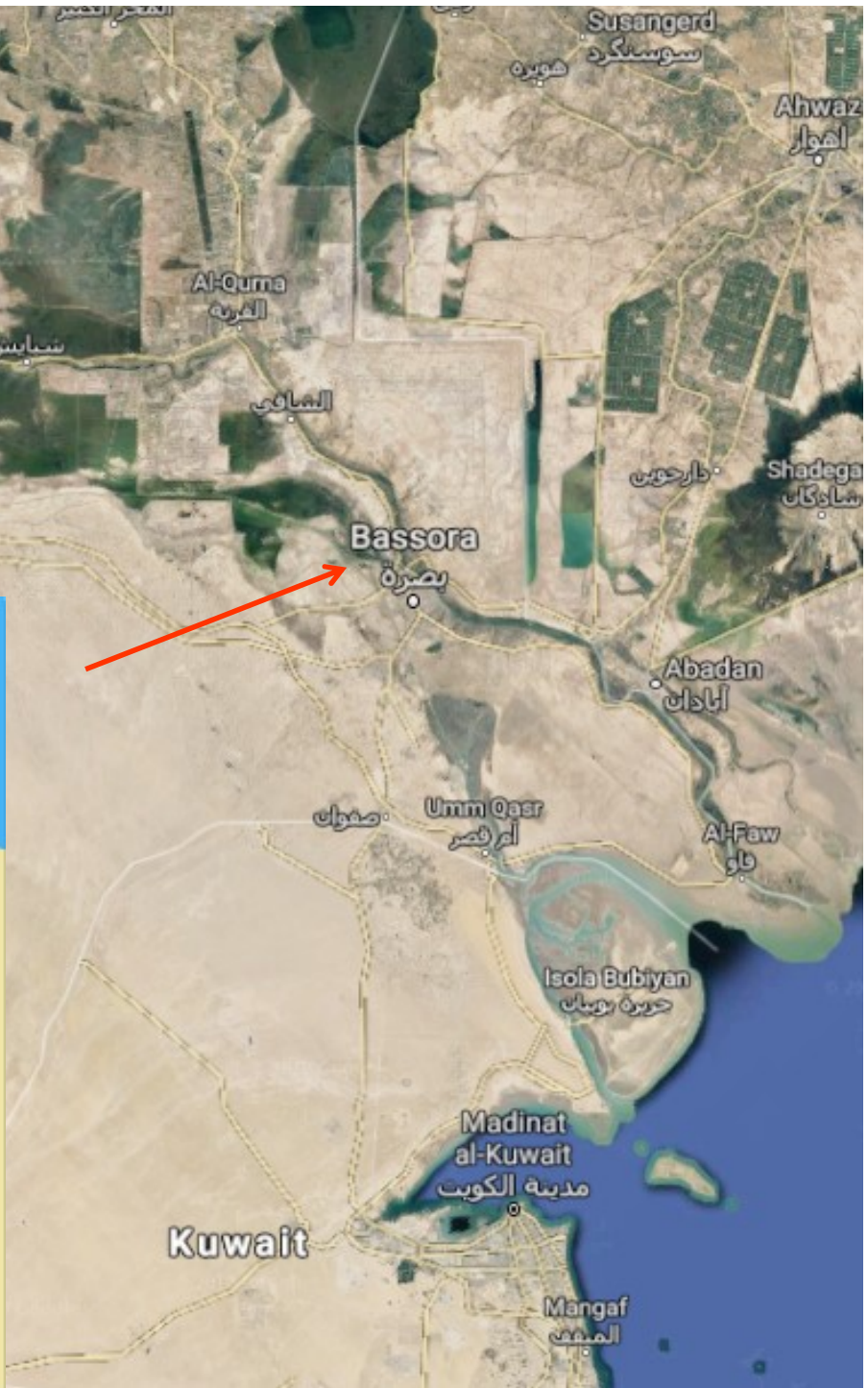
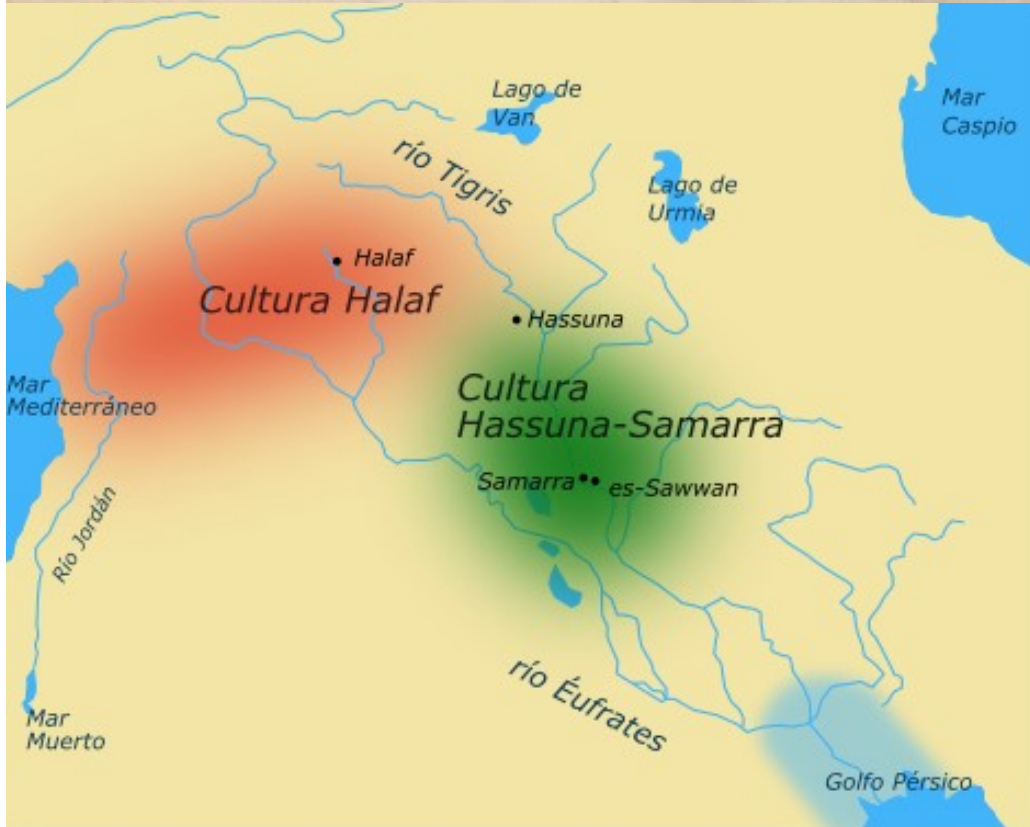
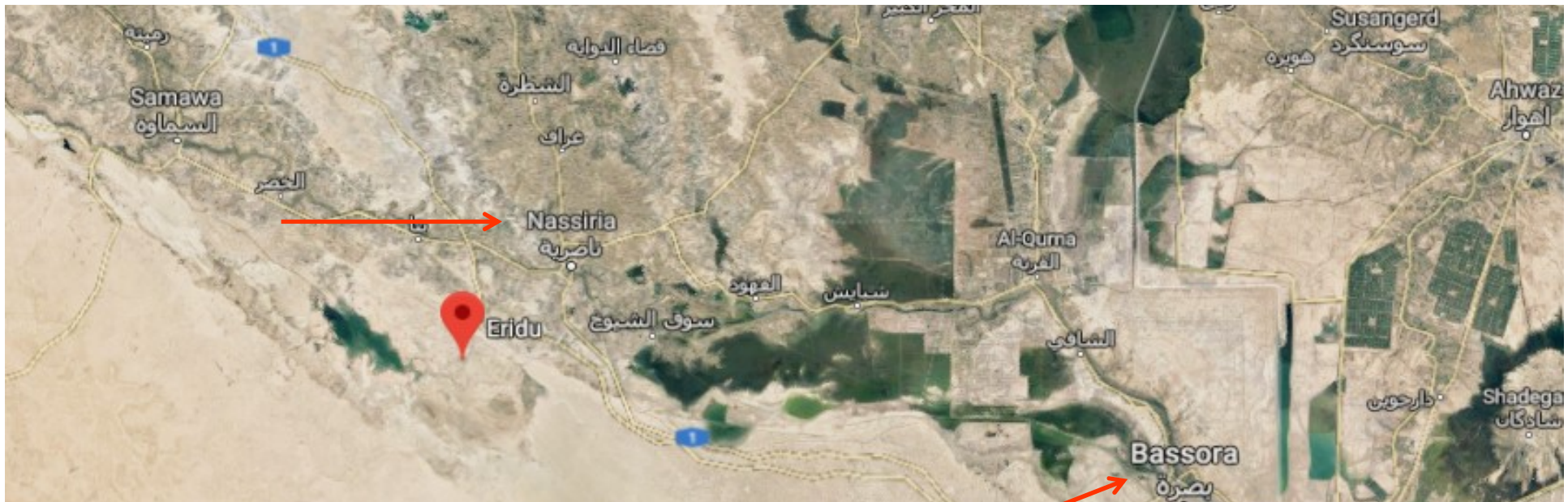


# La Mezzaluna Fertile



*Eridu: strutture del livello XVI (Safar et al. 1981, fig. 41).*

*Eridu: edifici dei livelli VI-VII (Safar et al. 1981).*

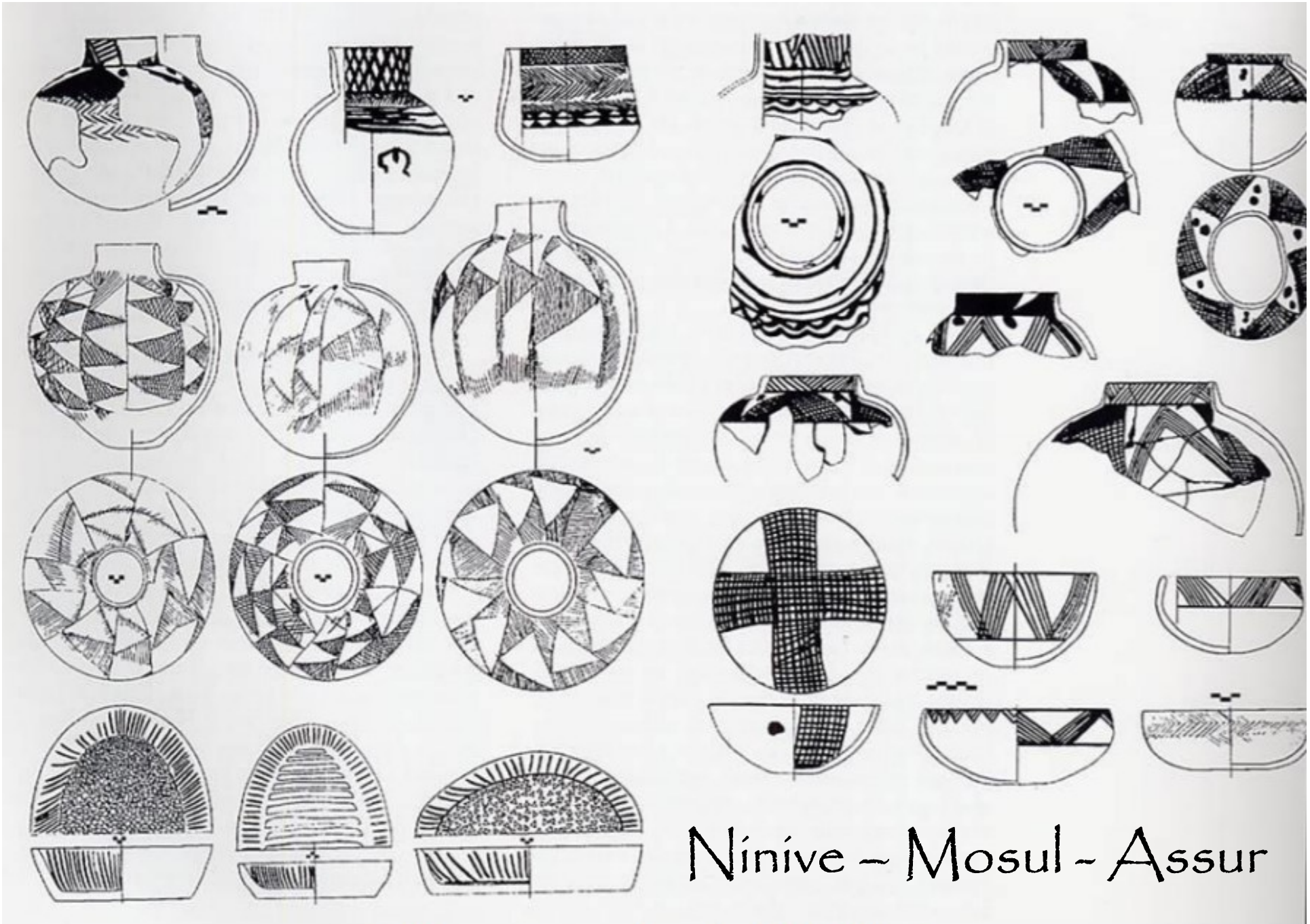




Ceramica **Samarra**  
Fine del VII mill a.C. –VI  
mill.

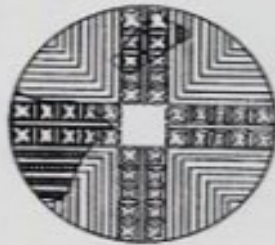
Ceramica **Halaf**  
VI mill a.C.





Ninive - Mosul - Assur

Tell Hassuna seconda metà del VII mill. a.C.



Ceramica **Samarra**  
Intorno al 6000 a.C. ca.  
(tra 6200 e 5700, come  
prolungamento della  
cultura di Hassuna)  
Ceramica dipinta di  
grande qualità; uso di  
tecniche di irrigazione;  
mattoni fatti in stampo

Bagdad



**Ceramica Halaf**



## Il Tardo Neolitico

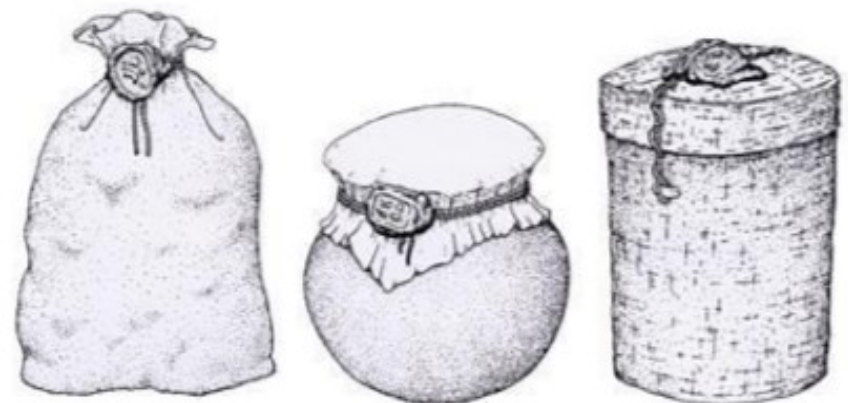


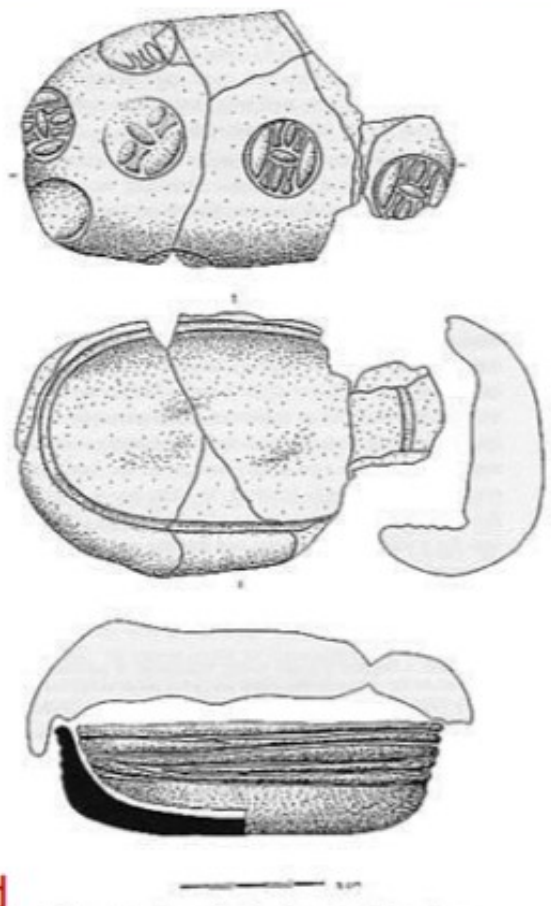
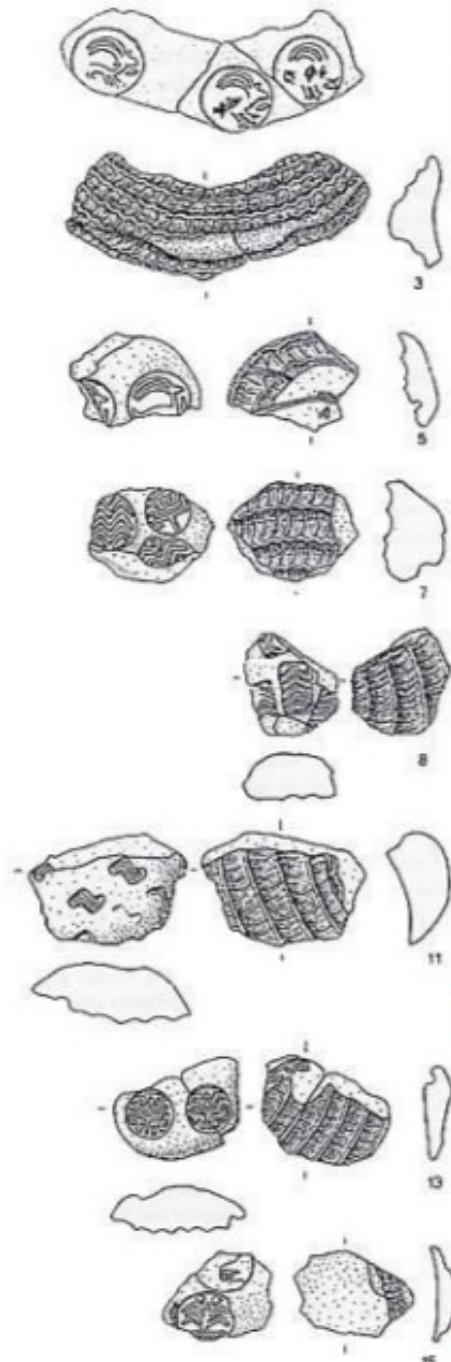
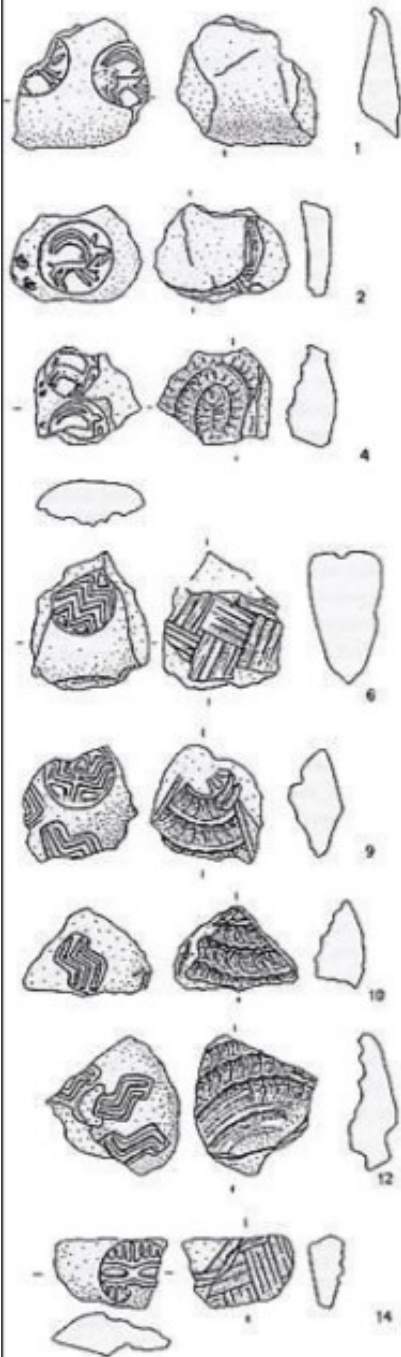
Intorno al 6000 a.C.

Fig. 1: Plan of the 'Burnt Village' at Sabi Abyad. Stars and numbers indicate the findspots and amounts of seals.



Fig. 4.23 Stone stamp seals from Tell el-Kerkh (nos. 1-4), Tell Halaf (no. 5), Judaidah (no. 6), Bouqras (no. 7), and Tell Sabi Abyad (nos. 8-9).





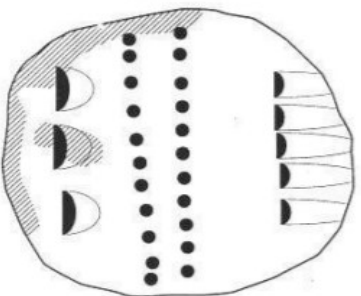
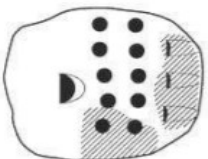
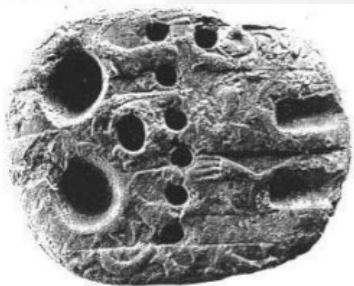
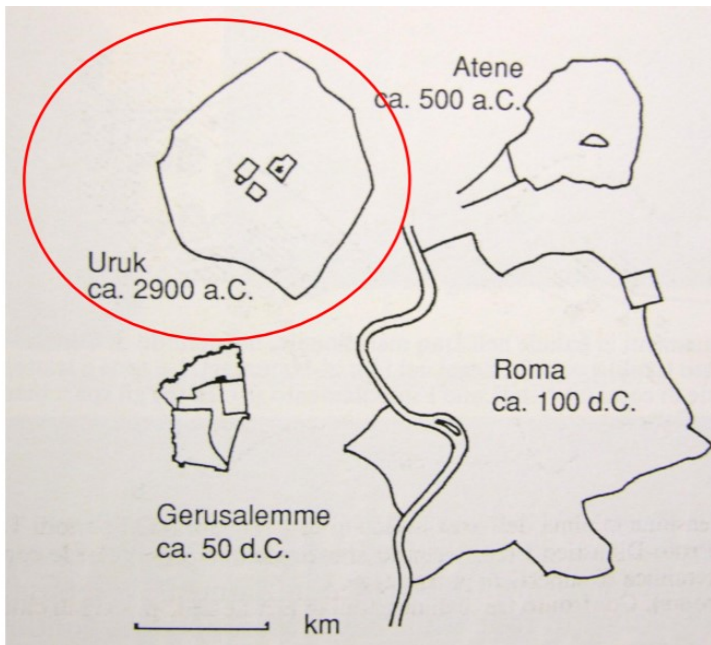
ca. 6000 a.C.

Tell Sabi Abyad

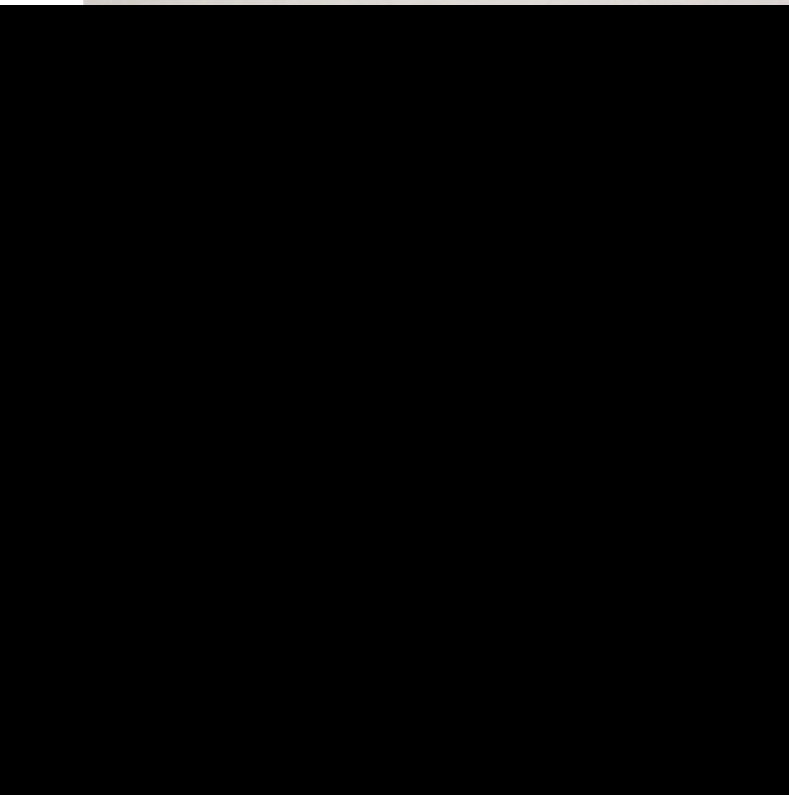
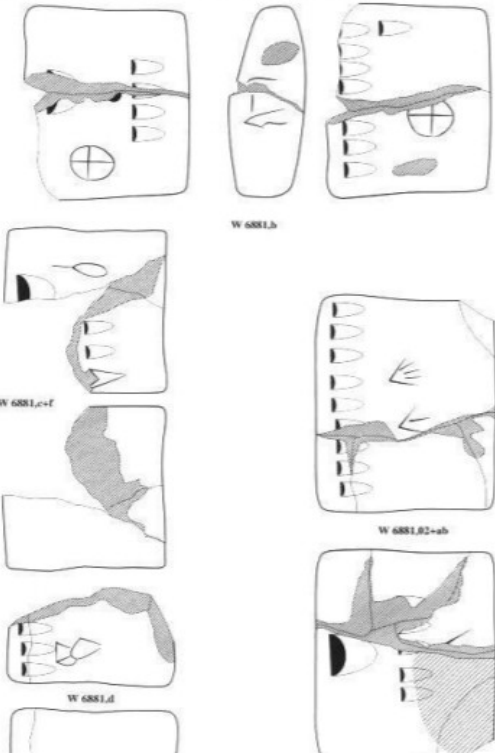
Fig. 6: Inlaid stone bowl and associated clay sealing from building II at Sabi Abyad.

Vari indicatori (produzione in massa e strumenti di registrazione) indicano un'organizzazione sociale e strutturazione amministrativa sempre più complesse

Dimensione degli insediamenti urbani: estensione di Uruk in rapporto a altre città del mondo antico



"Numero-ideographic" texts from Uruk (Red Temple)



# Uruk - Bassa Mesopotamía



# Uruk

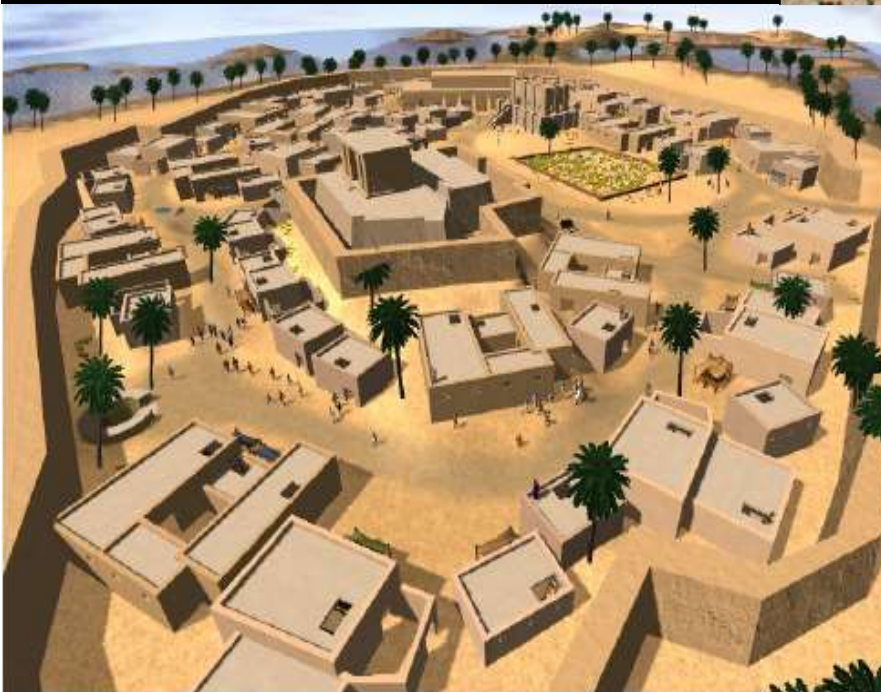


Tavoletta con segni pittografici



35

35. Tavoletta pittografica in argilla, da Uruk (Iraq), IV-III millennio a.C. Parigi, Musée du Louvre.





Nasce la  
Scrittura



Uruk, la prima città organizzata:  
Abitazioni, Templi, Magazzini, Archivi, Industrie





scrittura pittografica



scrittura ideografica



scrittura cuneiforme



scrittura geroglifica